

50 Years  
1966-2016

**Southern Living**  
SPECIAL ANNIVERSARY EDITION

# HOUSE PLANS

See how to  
make a  
small house  
live big  
PAGE 20

**75**  
OF OUR  
BEST DESIGNS  
EVER

**FIND YOUR  
DREAM HOME!**  
CLASSIC COTTAGES FROM THE  
SOUTH'S TOP ARCHITECTS

DISPLAY UNTIL DECEMBER 9, 2016

\$4.99US \$6.50CAN



0 70989 10440 2 65





# HOUSE PLANS

## *contents*



### FEATURES

#### THE NEW LOOK OF TRADITION

Take a tour of this classic Virginia farmhouse, *Fox Hill*.  
page 8

#### ROOM TO GROW

See how this small house, *Farmdale Cottage*, lives big.  
page 20

#### SOUTHERN CRAFTSMAN STYLE

With details like a wraparound porch, the *This Old House Cottage* oozes charm.  
page 38

#### NEW OLD HOUSE

Reclaimed materials and period details give the plan *Cottage Revival* an authentic feel.  
page 56

### ARCHITECTS & DESIGNERS

**SPITZMILLER & NORRIS**  
page 16

**JOHN TEE**  
page 26

**OUR TOWN PLANS**  
page 30

**MOSER DESIGN GROUP**  
page 34

**L. MITCHELL GINN & ASSOCIATES**  
page 44

**FRANK BETZ ASSOCIATES**  
page 52

**ALLISON RAMSEY ARCHITECTS**  
page 64

### FRUSTERIO DESIGN

page 70

**R.N. BLACK ASSOCIATES**  
page 72

**TOP 12 BEST-SELLING PLANS**  
page 80

### ABOUT OUR PLANS

**PLAN INDEX**  
page 77

**PRICING & ORDERING**  
page 78

**HOW TO USE OUR PLANS**  
page 79

### ON THE COVER

Take a peek inside the Perry, Georgia, home of James Farmer, who built the Spitzmiller & Norris-designed plan **Farmdale Cottage** (#1870), on page 20.

**PHOTOGRAPHED BY**  
EMILY FOLLOWILL

**EDITOR IN CHIEF**  
SID EVANS

**EDITOR, SPECIAL EDITIONS**  
JESSICA S. THUSTON

**ART DIRECTOR**  
CLAIRE CORMANY

**HOUSE PLANS MANAGER**  
LIL PETRUSNEK

**MANAGING EDITOR**  
MARY ELIZABETH DAVIS

**ASSOCIATE PRODUCTION MANAGER**  
RACHEL ELLIS

**COPY CHIEF**  
JULIE GILLIS

**CONTRIBUTING DESIGNER**  
NANCY HEARD

**VISIT [SOUTHERNLIVINGHOUSEPLANS.COM](http://SOUTHERNLIVINGHOUSEPLANS.COM)  
TO FIND HUNDREDS OF COTTAGES, CABINS, AND MORE!**





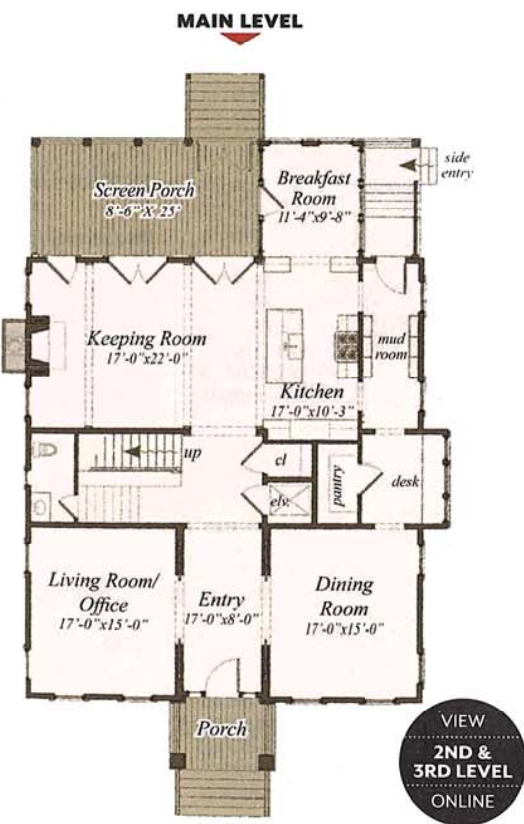
# OUR TOWN PLANS



PLAN NO. 1908

## BOHICKET

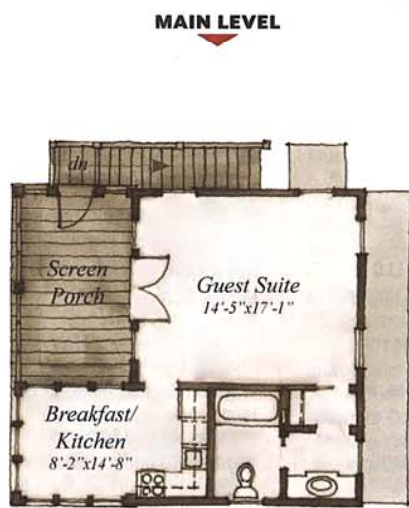
Square Feet: 4,639 Bedrooms: 3 Baths: 3 1/2  
Ceiling Heights: Main - 10' Second - 10' Third - 9'  
Foundation: Crawlspace Pricing Category: E



PLAN NO. 1907

## BUTTERNUT STREET

Square Feet: 512 Bedrooms: 1 Baths: 1  
Ceiling Heights: Main - 9' Lower - 9'  
Foundation: Slab Pricing Category: C



PLAN NO. 1909

## BENNING

Square Feet: 3,151 Bedrooms: 4 Baths: 4 1/2 Ceiling Heights: Main - 10' Second - 10'  
Foundation: Crawlspace Pricing Category: E



## About the Designer

**Suzanne Stern**  
OUR TOWN PLANS, LLC  
PEACHTREE CITY, GEORGIA  
Established 2002

You could say traditional architecture is in Suzanne Stern's blood. Her father Jim Strickland is the founding partner of the award-winning architectural and design firm Historical Concepts. She believes her love for historic preservation and vernacular architecture combined with her practical design tendencies allow her to create plans that are familiar yet contemporary and livable. "The main goal of Our Town Plans is to make classical architecture accessible to all," Suzanne says. "There are plenty of good floor plans out there, but the correct scale, proportion, and details are what determines which good plans become great houses."





OUR TOWN PLANS

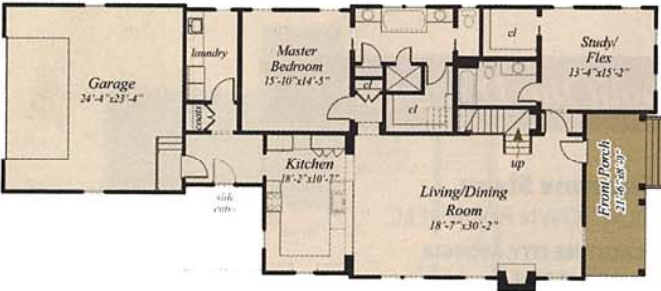


PLAN NO. 1910

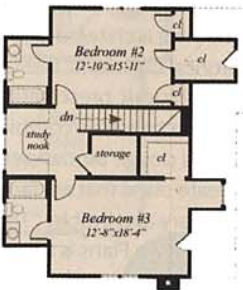
SEALE COURT

Square Feet: 2,785 Bedrooms: 4 Baths: 4 1/2  
Ceiling Heights: Main - 10' Second - 9'  
Foundation: Crawlpace Pricing Category: F

MAIN LEVEL



SECOND LEVEL

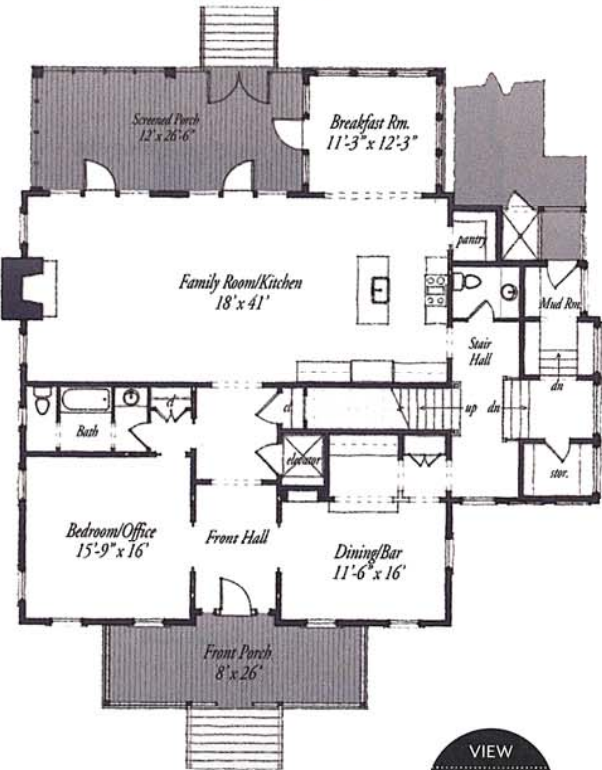


PLAN NO. 1853

COASTAL LIVING SHOWHOUSE

Square Feet: 4,092 Bedrooms: 4 Baths: 4 1/2  
Ceiling Heights: Main - 10' Second - 10'  
Foundation: Crawlpace Pricing Category: I

MAIN LEVEL



VIEW  
SECOND  
LEVEL  
ONLINE



PLAN NO. 1911

HUTCHESON FERRY

Square Feet: 2,352 Bedrooms: 4 Baths: 3  
Ceiling Heights: Main - 10'  
Foundation: Slab Pricing Category: G

MAIN LEVEL



**DESIGNING HOMES FOR OUR HEROES**  
Southern Living is proud to partner with Operation FINALLY HOME, a national, non-profit organization that builds custom, mortgage-free homes for wounded, ill, or injured veterans, as well as widows of the fallen. This mission is accomplished through a network of experienced builders, suppliers, and generous supporters. We call it "Building Hope" for those who have sacrificed so much to defend our freedoms.



PLAN NO. 1912

YOUNG'S CROSSING

Square Feet: 2,285 Bedrooms: 3 Baths: 3  
Ceiling Heights: Main - 10'  
Foundation: Slab Pricing Category: G

MAIN LEVEL





Find more photos and floor plans of our all-time favorite homes at [southernlivinghouseplans.com](http://southernlivinghouseplans.com).

# TOP 12 BEST

Call 1-866-772-3206

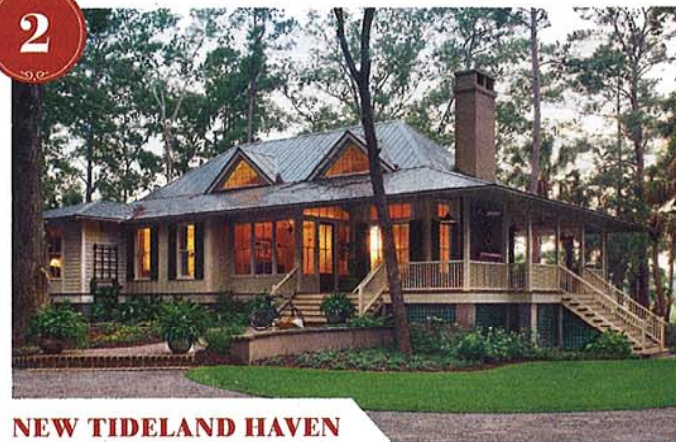
# SELLING HOUSE PLANS

or visit [SouthernLivingHousePlans.com](http://SouthernLivingHousePlans.com) to learn more about each of these beloved designs.



## COTTAGE OF THE YEAR

**Plan No. 593** Square Footage: 2,718  
Designed by Moser Design Group 4 Bedrooms and 3½ Baths



## NEW TIDELAND HAVEN

**Plan No. 1824** Square Footage: 2,622  
Designed by Our Town Plans, LLC 3 Bedrooms and 3½ Baths



## WHISPER CREEK

**Plan No. 1653** Designed by Square Footage: 1,555  
Allison Ramsey Architects, Inc. 2 Bedrooms and 2½ Baths



## FOREST GLEN

**Plan No. 238** Square Footage: 4,081  
Designed by Gary/Ragsdale, Inc. 4 Bedrooms and 3½ Baths



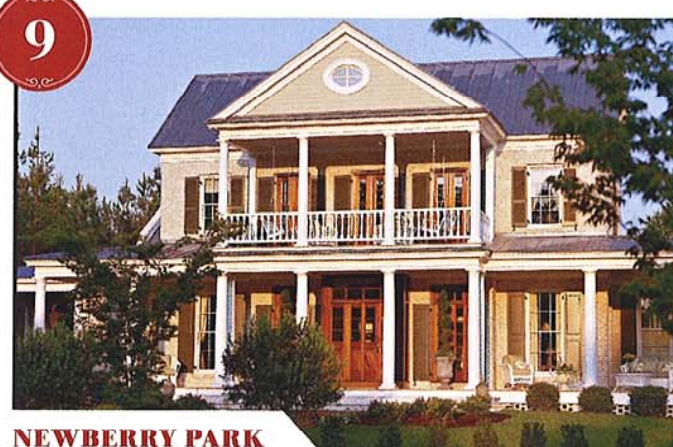
## FARMHOUSE REVIVAL

**Plan No. 1821** Designed by Square Footage: 3,511  
Historical Concepts, LLC 4 Bedrooms and 4½ Baths



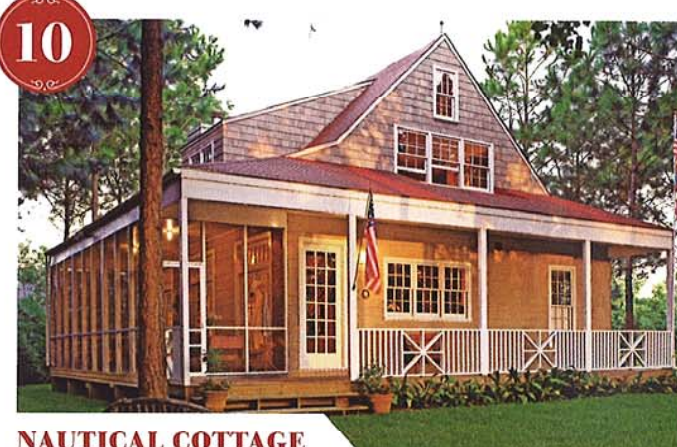
## SUGARBERRY COTTAGE

**Plan No. 1648** Square Footage: 1,679  
Designed by Moser Design Group 3 Bedrooms and 2½ Baths



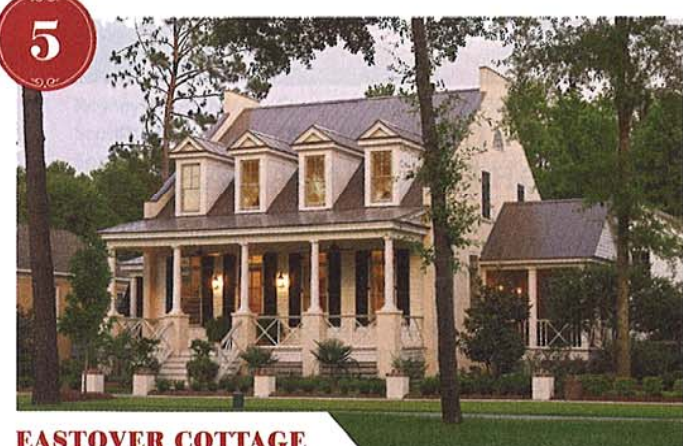
## NEWBERRY PARK

**Plan No. 978** Designed by Square Footage: 3,625  
Allison Ramsey Architects, Inc. 4 Bedrooms, 4 Baths, 2 Half Baths



## NAUTICAL COTTAGE

**Plan No. 224** Square Footage: 1,315  
Designed by Scott Ziegler 3 Bedrooms and 2 Baths



## EASTOVER COTTAGE

**Plan No. 1666** Designed by Square Footage: 2,530  
WaterMark Coastal Homes, LLC 3 Bedrooms and 3½ Baths



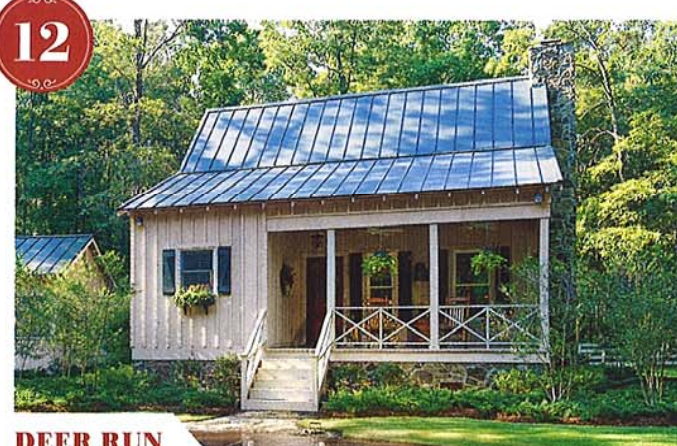
## BANNING COURT

**Plan No. 1254** Square Footage: 1,286  
Designed by Moser Design Group 2 Bedrooms and 2 Baths



## CAROLINA ISLAND HOUSE

**Plan No. 481** Square Footage: 2,738  
Designed by Historical Concepts, LLC 3 Bedrooms and 4 Baths



## DEER RUN

**Plan No. 731** Square Footage: 973  
Designed by William H. Phillips, Jr. 2 Bedrooms and 2 Baths