

CAPTAIN'S WATCH

OUR
TOWN
P L A N S

CREATE A PLACE WHERE TRADITION CAN ENDURE



CREATE A PLACE WHERE TRADITION CAN ENDURE with the Captain's Watch, a traditional design that is both casual and refined. The inviting two-story front porch and screened porch on the main level provide ample space for outdoor entertaining. The bedrooms are on the upper level. Generous sitting and bunk rooms are on the third level, where a spiral stair leads to the crow's nest.

SUMMARY

Bedrooms: 5
Bathrooms: 5½
Floors: 2 1/2
Foundation: Crawlspace-pier

DIMENSIONS

Width: 76'
Depth: 70'
Height: 54'-3" to highest ridge
Ceiling Height: 11'-0" main floor
10'-0" upper floor

AREA

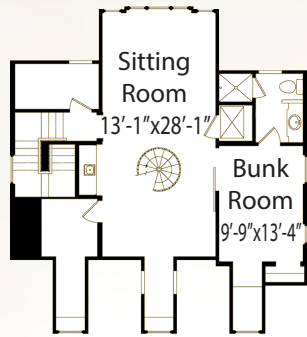
Conditioned: 4,920 sq. ft.
Porches: 1,730 sq. ft.
TOTAL: 6,650 sq. ft.

RE-USE FEE/RESTRICTIONS

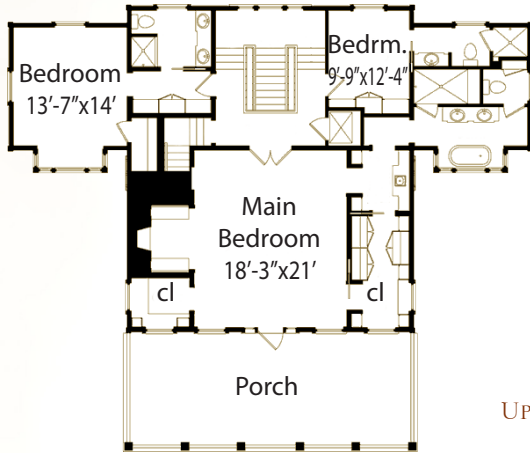
Construction Documents: \$2,890
Interiors Package: \$700



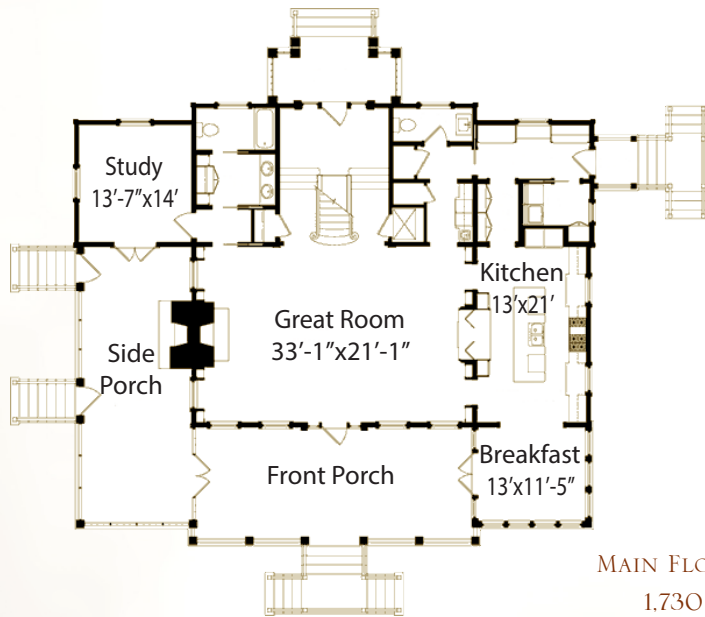
FLOORPLAN



THIRD FLOOR
1,080 S.F.



UPPER FLOOR
1,080 S.F.



MAIN FLOOR
1,730 S.F.

Plans are available on a limited basis. All dimensions are approximate.

ARCHITECTURAL DETAILS

EXTERIOR:

- Stunning front and back elevations give the house two 'fronts'
- Generous porches provide outdoor living and dining space

Study and breakfast room on main floor as well as the master bedroom on upper floor open to porches

- High ceilings and large, plentiful windows provide light and natural airflow

INTERIOR:

- Master bedroom suite on upper floor has a large bath, walk-in closets, and morning kitchen
- The study on the main floor can serve as a fifth bedroom and two bedroom suites on the upper floor are complimented by sitting room, bunk room with full bath, and plentiful storage on the third floor
- Elegant stair with elliptical opening to great room provides a dramatic focalpoint

CAPTAIN'S WATCH

PLANS ARE AVAILABLE THROUGH SOUTHERN LIVING
AT houseplans.southernliving.com

