

15 ABERCORN SQUARE

OUR
TOWN
P L A N S

CREATE A PLACE WHERE TRADITION CAN ENDURE

HIGHLIGHTS

Detached Townhouse

1,957 square feet

1 Bedrooms

1½ Bathrooms

Private Courtyard

Optional Guest Suite
(additional 378 s.f.)

Optional Attic Suite
(additional 740 s.f.)



CREATE A PLACE WHERE TRADITION CAN ENDURE with 15 Abercorn Square, a Greek Revival style townhouse with a generational feel. Ideally suited for a narrow lot, it recalls the South's timeless and historic, urban neighborhoods. Striking a graceful balance between formal and casual, this home invites entertaining yet encourages relaxation.

SUMMARY

Bedrooms: 1 (plus 3 optional)
Bathrooms: 1½ (plus 2 optional)
Floors: 2½
Foundation: Crawlspace-wall

DIMENSIONS

Width: 28' (including garage)
Depth: 97' - 6"
Height: 38' - 7" to highest ridge
Ceiling Height: 10' - main floor/upper floor
9' - attic floor

AREA

Conditioned: 1,957 sq. ft.
Unconditioned: 1,012 sq. ft.
TOTAL: 2,969 sq. ft.

RE-USE FEE/RESTRICTIONS

Construction Documents: Schedule 'F'
Interiors Package: Schedule '4'



SIDE ELEVATION



REAR ELEVATION

ARCHITECTURAL DETAILS

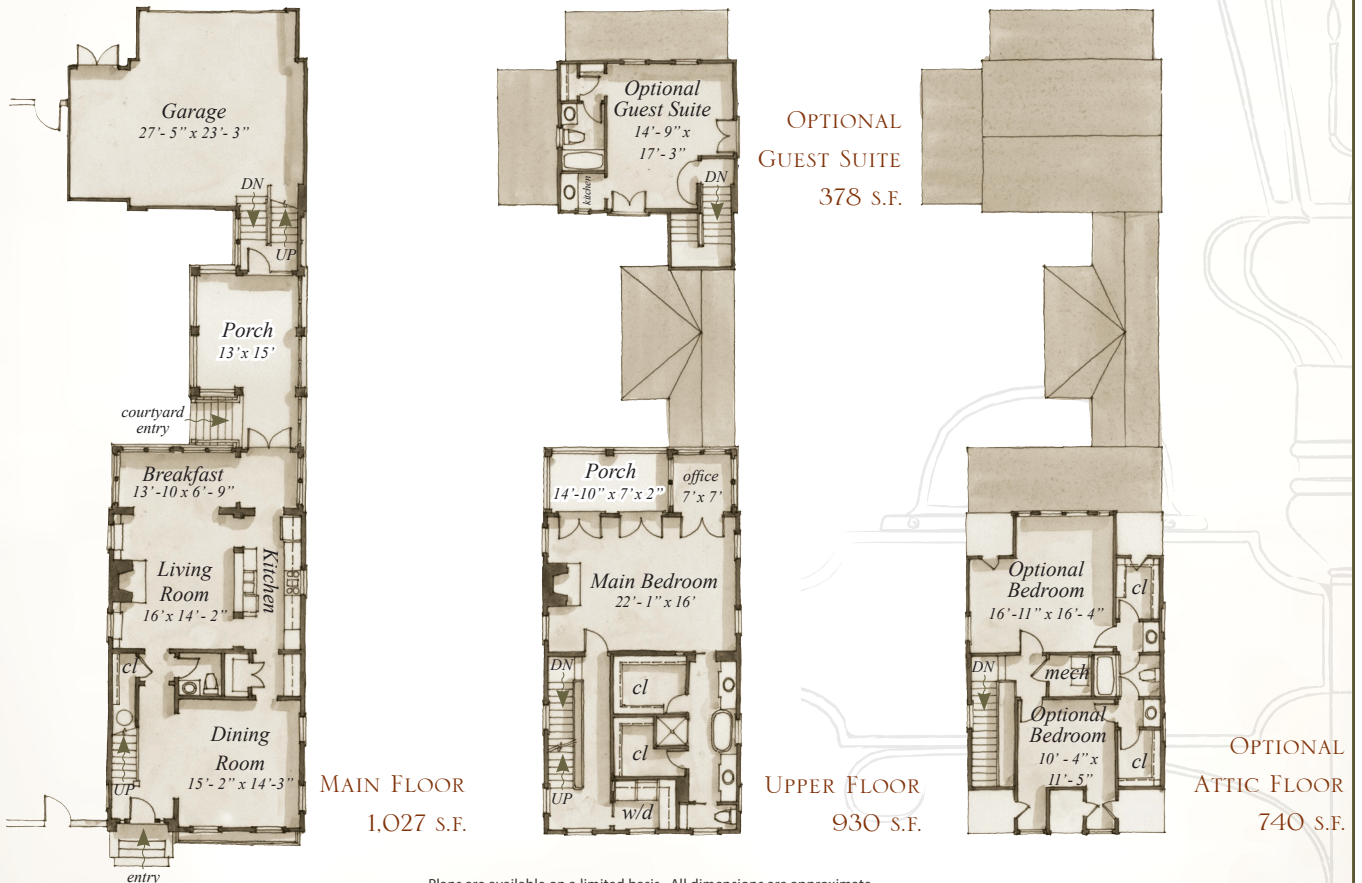
EXTERIOR:

- Classic Greek Revival details including front door with scroll brackets and pediment, main house cornice and rusticated stucco finish
- Parapet walls unique to southern vernacular
- "Generational" additions connect main house to carriage house
- Triple-hung windows on front facade with iron railing detail

INTERIOR:

- Interior trim consistent with the architectural style reinforces the sense of continuity and hierarchy throughout the house
- Transoms allow for shared light
- Playful board and batten detailing in carriage house guest suite
- Server with built-in display cabinetry and pantry situated between kitchen and dining room

FLOORPLAN



15 ABERCORN SQUARE

PLAN PRICING:

RE-USE FEE (INCLUDES 3 PLAN SETS) SCHEDULE 'F'

INTERIORS PACKAGE RE-USE FEE SCHEDULE '4'

\$50 PER ADDITIONAL PLAN SET

\$40 GROUND SHIPPING/HANDLING

OUR
TOWN
P L A N S

15 ABERCORN SQUARE

OUR
TOWN
PLANS

CREATE A PLACE WHERE TRADITION CAN ENDURE

