

195 ODESSA TERRACE

OUR
TOWN
P L A N S

CREATE A PLACE WHERE TRADITION CAN ENDURE

HIGHLIGHTS

1,892 square feet

2 Bedrooms on main floor

2 Sleeping bunks upstairs

2½ Bathrooms

Rear screened porch



CREATE A PLACE WHERE TRADITION CAN ENDURE with 195 Odessa Terrace, a casual cottage that calls to mind a calm and relaxed lifestyle. A spacious great room flows easily onto the front porch. Extending the living space, the large rear screen porch is an ideal place for entertaining.

SUMMARY

Bedrooms: 3
Bathrooms: 2½
Floors: 1½
Foundation: Crawlspace-Wall

DIMENSIONS

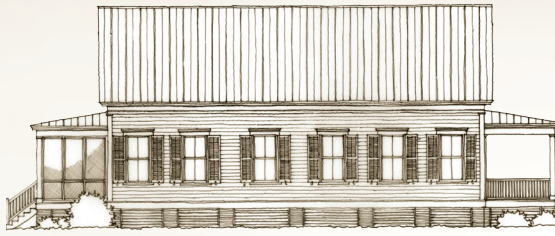
Width: 32'-10"
Depth: 72'-4"
Height: 30'-2" to highest ridge
Ceiling Height: 10'-5" main floor

AREA

Conditioned: 1,892 sq. ft.
Unconditioned: 1,386 sq. ft.
TOTAL: 3,278 sq. ft.

RE-USE FEE/RESTRICTIONS

Construction Documents: Schedule 'F'
Interiors Package: Schedule '4'



SIDE ELEVATION

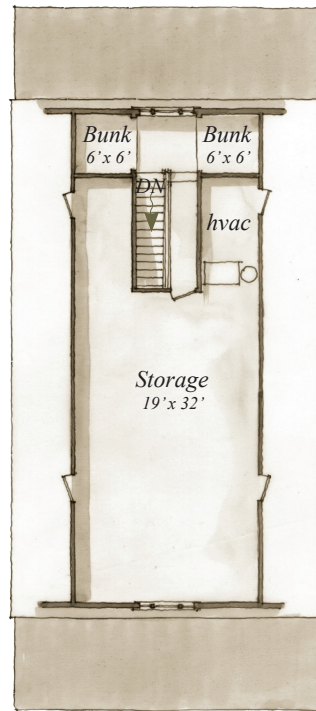


REAR ELEVATION

FLOORPLAN



MAIN FLOOR
1,664 S.F.



UPPER FLOOR
228 S.F.

Plans are available on a limited basis. All dimensions are approximate.

ARCHITECTURAL DETAILS

EXTERIOR:

- Simple gabled cottage with lap siding and metal roof
- Generous front porch and rear screened porch provide ample outdoor living space for engaging with the surroundings
- Well-proportioned windows with 2 over 2 lite pattern
- Front door with transom and sidelights

INTERIOR:

- Horizontal buttboard walls, ladder doors topped by interior transoms,
- Efficient galley kitchen with custom cabinetry,
- Main and guest bedrooms on lower level with french door access to rear screen porch
- Main suite with dual walk in closets, master bath with dual vanities, clawfoot tub and separate shower
- Upper level with two bunks and abundant storage
- Plans included for future built-out/expansion of attic space

195 ODESSA TERRACE

PLAN PRICING:

SCHEDULE 'F' RE-USE FEE (INCLUDES 3 PLAN SETS)

SCHEDULE '4' INTERIORS PACKAGE RE-USE FEE

\$50 PER ADDITIONAL PLAN SET

\$40 GROUND SHIPPING/HANDLING

OUR
TOWN
PLANS