

200 MADISON STREET



CREATE A PLACE WHERE TRADITION CAN ENDURE

HIGHLIGHTS

1,719 square feet

2 Bedrooms

2½ Bathrooms

Built-in study/work nook

Rear porch

Upstairs sitting room

Generous wrap around front porch



CREATE A PLACE WHERE TRADITION CAN ENDURE with 200 Madison Street, a classic cottage with universal appeal. Its efficient floor plan and comfortable living spaces are a welcome update for modern living.

SUMMARY

Bedrooms: 2
Bathrooms: 2½
Floors: 1½
Foundation: Crawl-space-pier

DIMENSIONS

Width: 28'-1"
Depth: 63'-5"
Height: 28'-5" to highest ridge
Ceiling Height: 9'-9" main floor
8'-10" upper floor

AREA

Conditioned: 1,719 sq. ft.
Porches: 450 sq. ft.
TOTAL: 2,169 sq. ft.

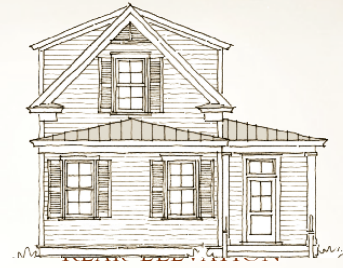
RE-USE FEE/RESTRICTIONS

Construction Documents: Schedule 'E'
Interiors Package: Schedule '3'

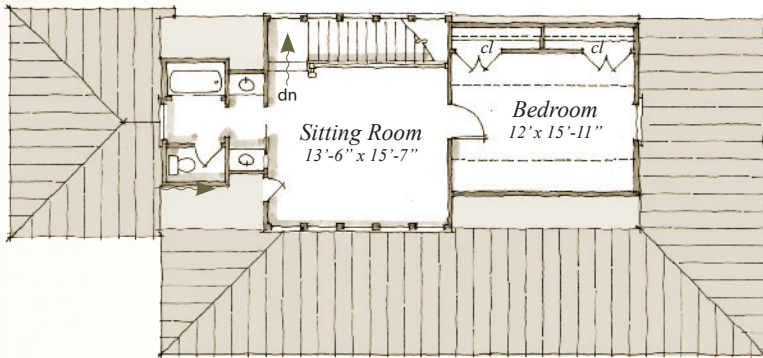




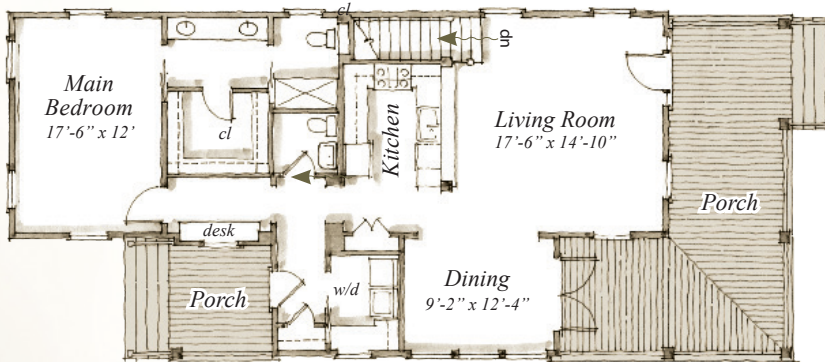
SIDE ELEVATION



FLOORPLAN



UPPER FLOOR
832 S.F.



MAIN FLOOR
1,664 S.F.

Plans are available on a limited basis. All dimensions are approximate.

ARCHITECTURAL DETAILS

EXTERIOR:

- Classic cottage with lapped and board & batten siding, gabled main roof, and brick piers
- Windows with 4 over 4 lite pattern and operable shutters
- Welcoming deep L-shaped front porch provides ample outdoor living space and encourages neighborhood interaction
- Rear porch with entrance separated from living areas

INTERIOR:

- Floor plan well suited for either a primary or secondary residence
- Simple, well-proportioned trim details in keeping with vernacular style
- Open kitchen, living, and dining rooms maximize available space in all areas
- Built-in kitchen cabinetry with bar height dining
- Generous upstairs sitting room well suited for entertaining or overnight guests
- Built-in desk cabinetry at study nook

9 BEAUMONT DRIVE

PLAN PRICING:

RE-USE FEE (INCLUDES 3 PLAN SETS) SCHEDULE 'E'

INTERIORS PACKAGE RE-USE FEE SCHEDULE '3'

\$50 PER ADDITIONAL PLAN SET

\$40 GROUND SHIPPING/HANDLING

OUR
TOWN
PLANS