

230 RED HILL ROAD

OUR
TOWN
P L A N S

CREATE A PLACE WHERE TRADITION CAN ENDURE

HIGHLIGHTS

794 square feet

2 Bedrooms

2 Bathrooms

Eat-in kitchen

Screen porch off first
floor bedroom



CREATE A PLACE WHERE TRADITION CAN ENDURE with 230 Red Hill Road, a charming cottage with universal appeal. Efficient living spaces and comfortable porches make this a delightful guest home or weekend retreat. Its simple massing and details such as exposed rafters make this a welcome addition to any neighborhood.

SUMMARY

Bedrooms: 2
Bathrooms: 2
Floors: 2
Foundation: Crawl-space-pier

DIMENSIONS

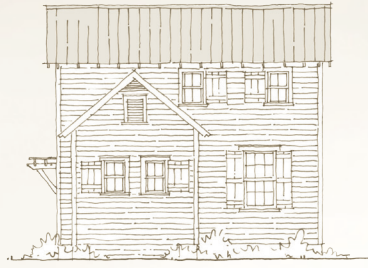
Width: 25'-6"
Depth: 34'-5"
Height: 24'-6" to highest ridge
Ceiling Height: 8'-10" & 8' main floor
9'-1" upper floor

AREA

Conditioned: 794 sq. ft.
Porches: 146 sq. ft.
TOTAL: 940 sq. ft.

RE-USE FEE/RESTRICTIONS

Construction Documents: Schedule 'B'
Interiors Package: Schedule '1'

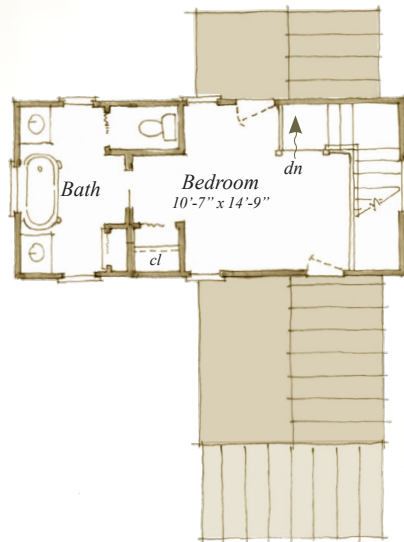


REAR ELEVATION

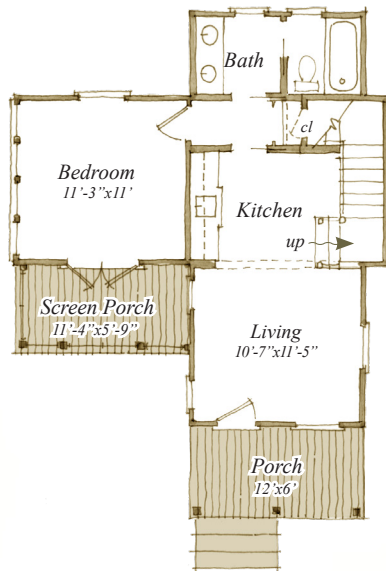


SIDE ELEVATION

FLOORPLAN



UPPER FLOOR
296 S.F.



MAIN FLOOR
498 S.F.

Plans are available on a limited basis. All dimensions are approximate.

ARCHITECTURAL DETAILS

EXTERIOR:

- Playful cottage with details, such as lattice work and pergola, butt-board siding, exposed rafters, and a standing seam metal roof
- Well-proportioned windows are framed by operable batten plank shutters
- Inviting porches provide for neighborhood interaction and outdoor enjoyment
- Brick pier foundation with horizontal board insets

INTERIOR:

- Simple, well-proportioned trim details in keeping with architectural style
- Kitchen with flat panel cabinetry
- Walls detailed with vertical butt-board paneling
- Traditional 2 panel doors reinforce cottage feel

230 RED HILL ROAD

PLAN PRICING:
 SCHEDULE 'B' RE-USE FEE (INCLUDES 3 PLAN SETS)
 SCHEDULE 'I' INTERIORS PACKAGE RE-USE FEE
 \$50 PER ADDITIONAL PLAN SET
 \$40 GROUND SHIPPING/HANDLING

OUR
TOWN
P L A N S