

# THE COUNTRY LIVING ANNIVERSARY FARMHOUSE

OUR  
TOWN  
P L A N S

CREATE A PLACE WHERE TRADITION CAN ENDURE

## HIGHLIGHTS

3,016 square feet

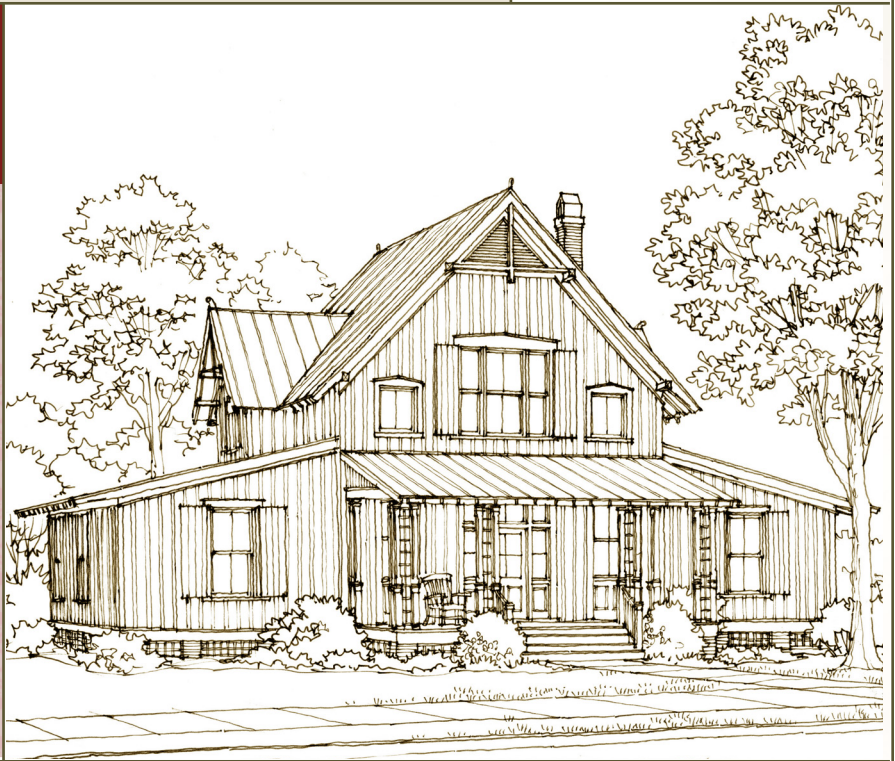
3 Bedrooms  
(plus bunk nook)

3½ Bathrooms

Abundant porches

Central gathering  
room with fireplace

Built-ins throughout



CREATE A PLACE WHERE TRADITION CAN ENDURE with The Country Living Anniversary Farmhouse, a casual home with Folk details such as latticed porch columns, a steeply pitched roof and exposed rafters. A twist on the Carpenter Gothic style, the home is accented with board and batten siding and a metal roof which lend a playful, vernacular appeal.

### SUMMARY

Bedrooms: 3  
Bathrooms: 3½  
Floors: 1½  
Foundation: Crawlspace-pier

### DIMENSIONS

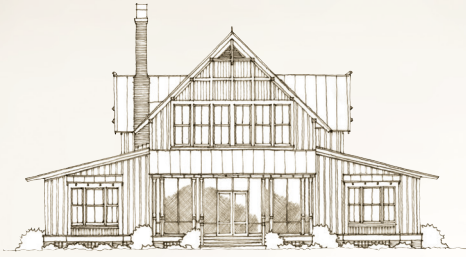
Width: 59'-6"  
Depth: 56'-4"  
Height: 34'-7" to highest ridge  
Ceiling Height: 10' main floor  
9'-9" upper floor

### AREA

Conditioned: 3,016 sq. ft.  
Porches: 545 sq. ft.  
TOTAL: 3,561 sq. ft.

### RE-USE FEE/RESTRICTIONS

Construction Documents: Schedule 'I'  
Interiors Package: Schedule '7'

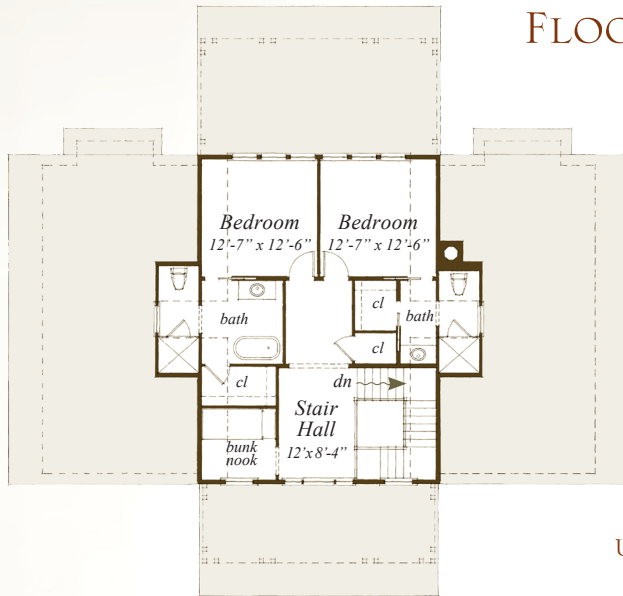


REAR ELEVATION

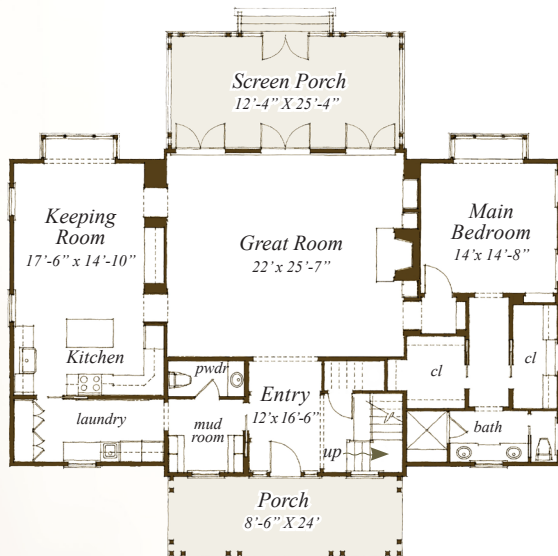


SIDE ELEVATION

## FLOORPLAN



UPPER FLOOR  
943 S.F.



MAIN FLOOR  
2,073 S.F.

All dimensions are approximate.

## ARCHITECTURAL DETAILS

### EXTERIOR:

- Casual folk cottage with slender paired porch columns, a steeply pitched roof, and exposed rafters
- Board and Batten siding, lattice work and 5V metal roof in keeping with regional vernacular
- Large double-hung windows throughout provide abundant natural light
- Deep covered and screened porches offer outdoor living space and encourage neighborly interaction

### INTERIOR:

- Well-proportioned trim details in keeping with architectural style - select rooms detailed with vertical buttboard paneling
- Transoms above doorways and openings allow shared light while maintaining privacy
- Entry stairhall with unique built-in seating and latticed wall detail
- Spacious laundry room with peg-board wall, built-in cabinets above washer/dryer and sink, bench at window, and a generous pantry
- Mud room with built-in cubbies, hooks, and storage flanking the window
- Bunk nook with built-in bunk beds for special guests

## THE COUNTRY LIVING ANNIVERSARY FARMHOUSE

### PLAN PRICING:

SCHEDULE 'T' RE-USE FEE (INCLUDES 3 PLAN SETS)

SCHEDULE '7' INTERIORS PACKAGE RE-USE FEE

\$50 PER ADDITIONAL PLAN SET

\$40 GROUND SHIPPING/HANDLING

OUR  
TOWN  
P L A N S