

41 DAPHNE WAY



CREATE A PLACE WHERE TRADITION CAN ENDURE

HIGHLIGHTS

2,156 square feet

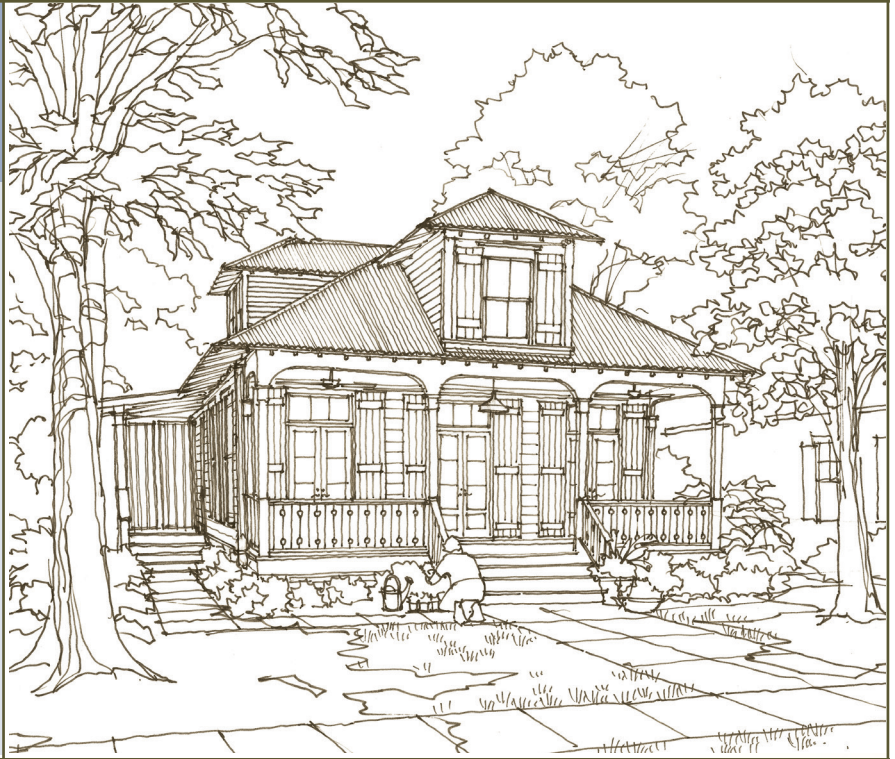
3 Bedrooms

3½ Bathrooms

Central great room
and side service entry

Inviting front porch
with whimsical appeal

Attic loft with built-in
beds and cabinetry



CREATE A PLACE WHERE TRADITION CAN ENDURE with 41 Daphne Way, a neighborhood bungalow that is fun, functional and replete with Folk detail. Exposed rafter tails, a corrugated metal roof, decorative porch posts and large operable shutters lend to this home's playful attitude. On the inside, a spacious great room easily flows onto the front porch and an attic loft serves as a cozy retreat.

SUMMARY

Bedrooms: 3
Bathrooms: 3½
Floors: 1½
Foundation: Crawlspace-pier

DIMENSIONS

Width: 40'-3"
Depth: 60'-9"
Height: 25'-1" to highest ridge
Ceiling Height: 9'-11" main floor
9'-1" upper floor

AREA

Conditioned: 2,156 sq. ft.
Porches: 419 sq. ft.
TOTAL: 2,575 sq. ft.

RE-USE FEE/RESTRICTIONS

Construction Documents: Schedule 'G'
Interiors Package: Schedule '4'



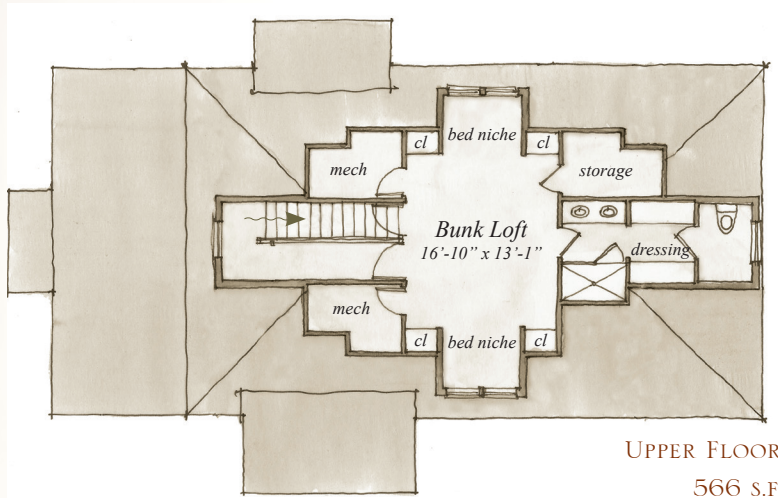


SIDE ELEVATION

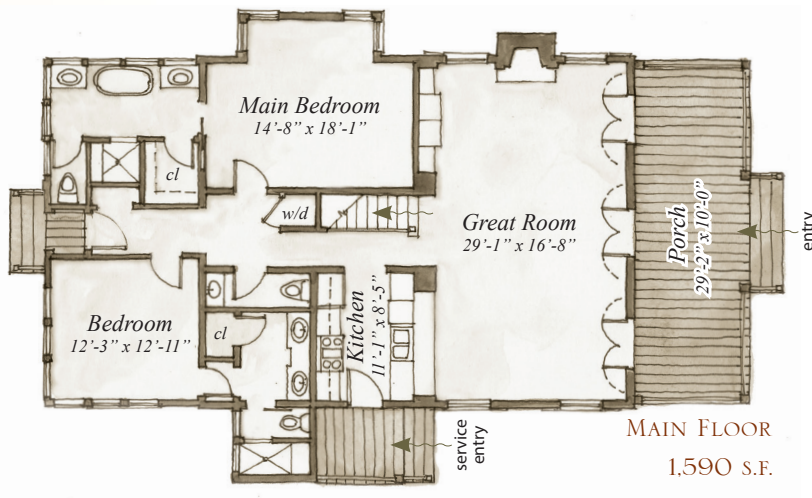


REAR ELEVATION

FLOORPLAN



UPPER FLOOR
566 S.F.



MAIN FLOOR
1,590 S.F.

Plans are available on a limited basis. All dimensions are approximate.

ARCHITECTURAL DETAILS

EXTERIOR:

- Casual cottage with Folk influences, including exposed rafter tails, decorative wood posts and hipped roof with dormers
- Designed with vernacular detail including authentic materials such as lap siding with board and batten accents and a corrugated metal roof
- 10' deep front porch with multiple french doors to interior provides indoor/outdoor living space
- Oversized windows promote a sense of spaciousness and harvest abundant natural light

INTERIOR:

- Butt-board paneling and architectural trim in Folk tradition maintains character throughout the interior
- Central great room with fireplace provides a large gathering space at the heart of the cottage
- Built-in cabinetry for entertainment center provides a beautiful furniture-like architectural piece for storing equipment
- Attic retreat has extensive built-ins, including bed platforms, drawers, visitor closets and dressing area

41 DAPHNE WAY

PLAN PRICING:
 SCHEDULE 'G' RE-USE FEE (INCLUDES 3 PLAN SETS)
 SCHEDULE '4' INTERIORS PACKAGE RE-USE FEE
 \$50 PER ADDITIONAL PLAN SET
 \$40 GROUND SHIPPING/HANDLING

OUR
TOWN
PLANS