

55 REIDSVILLE PLACE

OUR
TOWN
P L A N S

CREATE A PLACE WHERE TRADITION CAN ENDURE

HIGHLIGHTS

3,580 square feet

3 or 4 Bedrooms

4½ Bathrooms

**Flex space with
fireplace**

Kitchen with island

**Master suite with
sitting room**



CREATE A PLACE WHERE TRADITION CAN ENDURE with 55 Reidsville Place, a folk cottage with slender porch columns, exposed rafters and a steeply pitched gable roof. Board and Batten siding and a standing seam copper roof add to the home's cottage appeal. On the interior, an open floorplan with private bedroom suites makes this home well suited for a primary residence or a vacation getaway.

SUMMARY

Bedrooms: 3
Bathrooms: 4½
Floors: 2
Foundation: Crawlspace-pier

DIMENSIONS

Width: 54'-4"
Depth: 66'-10"
Height: 32'-5" to highest ridge
Ceiling Height: 10'-1" main floor
10'-1" upper floor

AREA

Conditioned: 3,580 sq. ft.
Porches: 948 sq. ft.
TOTAL: 4,528 sq. ft.

RE-USE FEE/RESTRICTIONS

Construction Documents: \$3,500
Interiors Package: \$900

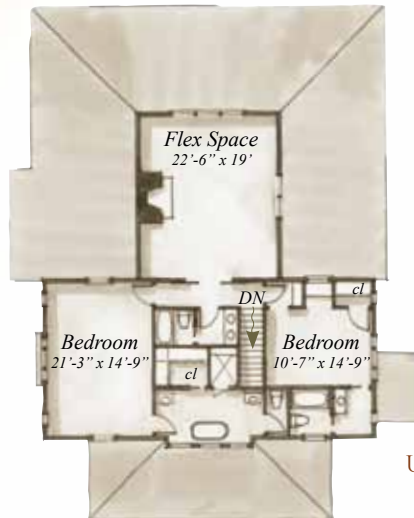


REAR ELEVATION

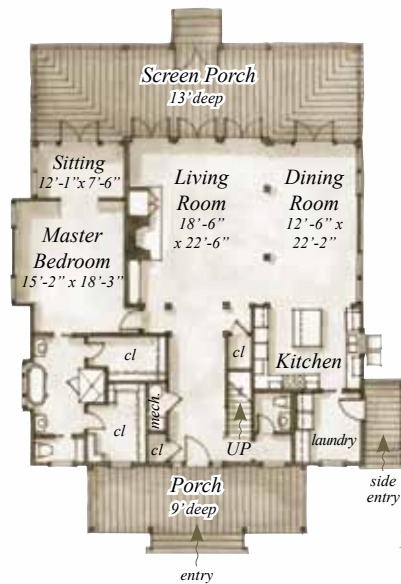


SIDE ELEVATION

FLOORPLAN



UPPER FLOOR
1,489 S.F.



MAIN FLOOR
2,091 S.F.

Plans are available on a limited basis. All dimensions are approximate.

ARCHITECTURAL DETAILS

EXTERIOR:

- Playful cottage with Folk details, such as slender porch columns, exposed rafters, board and batten siding, and a standing seam copper roof
- Oversized windows with 2-over-2 lite patterns framed by operable batten plank shutters
- Well-proportioned and detailed front door with sidelights and transom
- Deep porches provide for neighborhood interaction and outdoor enjoyment
- Brick pier foundation with lattice insets

INTERIOR:

- Well-proportioned trim details in keeping with architectural style and walls detailed with buttboard paneling
- Kitchen with integrated appliances and furniture quality island
- Living room with true masonry fireplace flanked by built-in entertainment cabinet and bookshelves
- Transoms above doors allow for shared light
- Traditional ladder doors reinforce cottage feel

55 REIDSVILLE PLACE

PLAN PRICING:

\$3,500 CONSTRUCTION DOCUMENTS RE-USE FEE (INCLUDES 3 PLAN SETS)

\$900 INTERIORS PACKAGE RE-USE FEE

\$50 PER ADDITIONAL PLAN SET

\$20 GROUND SHIPPING/HANDLING

OUR
TOWN
P L A N S