

59 GREENVILLE LANE

OUR
TOWN
P L A N S

CREATE A PLACE WHERE TRADITION CAN ENDURE

HIGHLIGHTS

3,466 square feet

3 Bedrooms

3½ Bathrooms

Open floor plan

Dual level porches

Walk-in pantry

Optional Attic Suite
(additional 1,098 s.f.)



CREATE A PLACE WHERE TRADITION CAN ENDURE with 59 Greenville Lane, a Folk home with slender porch columns and a steeply pitched roof. The open floorplan and abundant porches reflect a relaxed lifestyle in which entertaining is a priority. With details that are suggestive of the Mississippi Delta region, this home would complement any neighborhood setting.

SUMMARY

Bedrooms: 3 (plus 1 optional)
Bathrooms: 3½ (plus 1 optional)
Floors: 2½
Foundation: Crawlspace-pier

DIMENSIONS

Width: 49'-5"
Depth: 66'-3"
Height: 42'-5" to highest ridge
Ceiling Height: 12'-1" - main floor
11'-3" - upper floor
9'-6" - attic floor

AREA

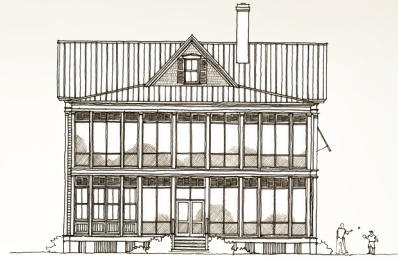
Conditioned: 3,466 sq. ft.
Porches: 2,362 sq. ft.
TOTAL: 5,828 sq. ft.

RE-USE FEE/RESTRICTIONS

Construction Documents: Schedule 'J'
Interiors Package: Schedule '8'

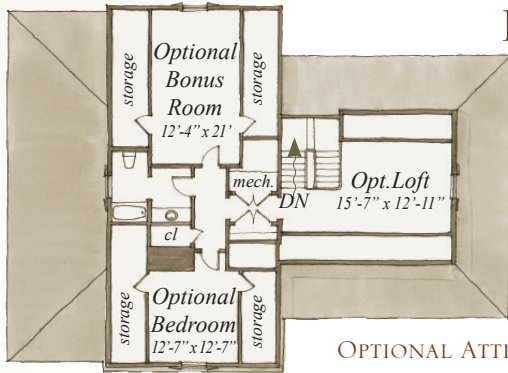


SIDE ELEVATION

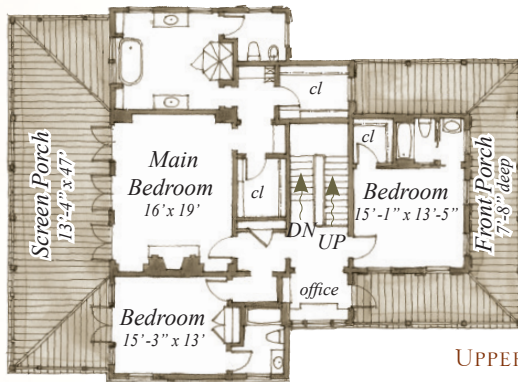


REAR ELEVATION

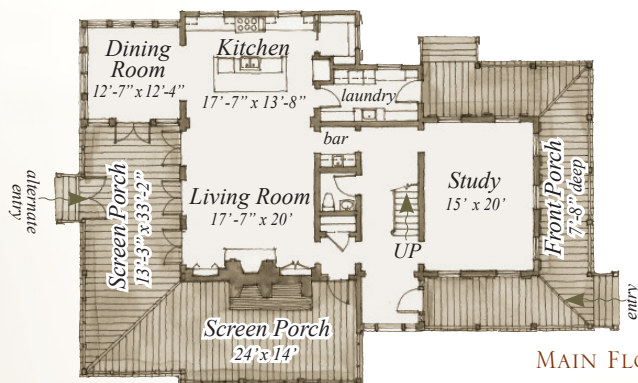
FLOORPLAN



OPTIONAL ATTIC FLOOR
1,098 S.F.



UPPER FLOOR
1,801 S.F.



MAIN FLOOR
1,665 S.F.

Plans are available on a limited basis. All dimensions are approximate.

ARCHITECTURAL DETAILS

EXTERIOR:

- Folk home with Mississippi Delta detailing including slender columns, brackets, straight edge shingles in gables and a steeply pitched roof with 5V metal roof
- Oversized windows with 2-over-2 lite pattern and operable shutters
- 8' deep wrap-around front porch with access through triple hung windows from study
- 13' wrap-around rear screen porch with outdoor fireplace and log storage offers outdoor living

INTERIOR:

- Well-proportioned and refined architectural trim details with varied profiles
- Extensive use of transoms over doors and cased openings for shared light
- Masonry fireplace with wood surround flanked by built-in cabinets in living room
- Kitchen with prep island, abundance of storage space, and integrated appliances
- Built-in cabinetry, bookcases and storage throughout the house
- Four sets of french doors to screened porch allow for seasonal expansion of living space

59 GREENVILLE LANE

PLAN PRICING:

SCHEDULE 'J' RE-USE FEE (INCLUDES 3 PLAN SETS)

SCHEDULE '8' INTERIORS PACKAGE RE-USE FEE

\$50 PER ADDITIONAL PLAN SET

\$40 GROUND SHIPPING/HANDLING

OUR
TOWN
P L A N S