

77 ANNAPOLIS COURT

OUR
TOWN
PLANS

CREATE A PLACE WHERE TRADITION CAN ENDURE

HIGHLIGHTS

2,303 square feet

3 Bedrooms

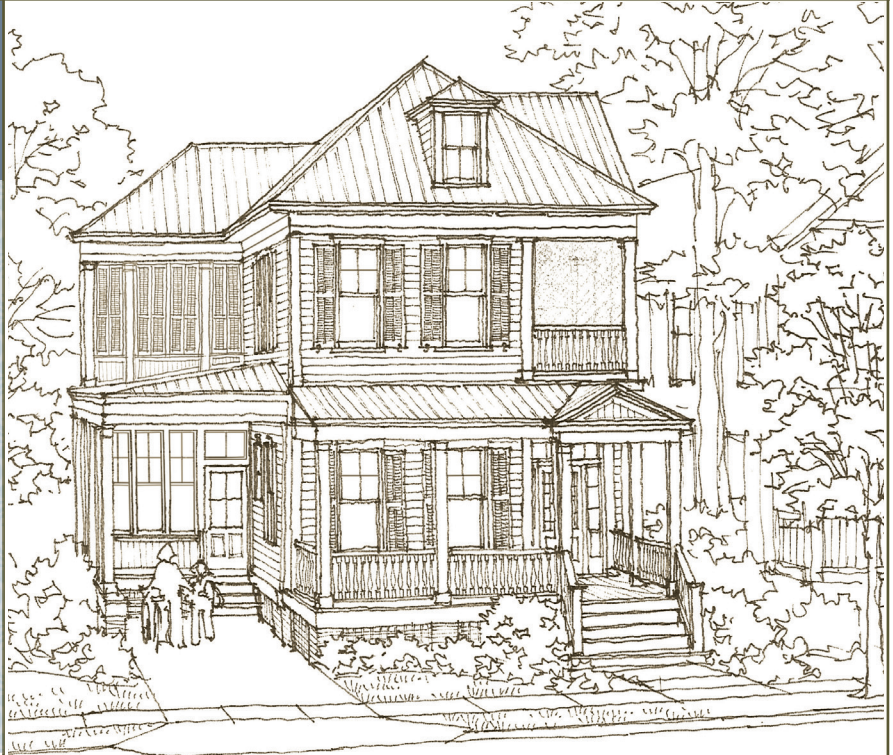
3½ Bathrooms

Main Bedroom with
sleeping porch

Dual fireplaces

Integrated carport

Front and rear
porches



CREATE A PLACE WHERE TRADITION CAN ENDURE with 77 Annapolis Court, a charming three-bay home with a brick foundation and a metal roof. Generous porches encourage outdoor living and provide interaction within the neighborhood setting. The main bedroom suite includes a private screen porch.

SUMMARY

Bedrooms: 3
Bathrooms: 3½
Floors: 2
Foundation: Crawlspace-pier

DIMENSIONS

Width: 33'-10"
Depth: 69'-6"
Height: 36'-6" to highest ridge
Ceiling Height: 10'-9" main floor
10'-1" upper floor

AREA

Conditioned: 2,303 sq. ft.
Porches: 1,035 sq. ft.
TOTAL: 3,338 sq. ft.

RE-USE FEE/RESTRICTIONS

Construction Documents: Schedule 'G'
Interiors Package: Schedule '4'

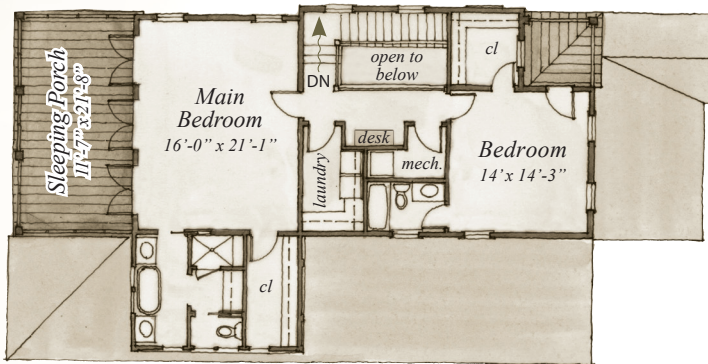


SIDE ELEVATION

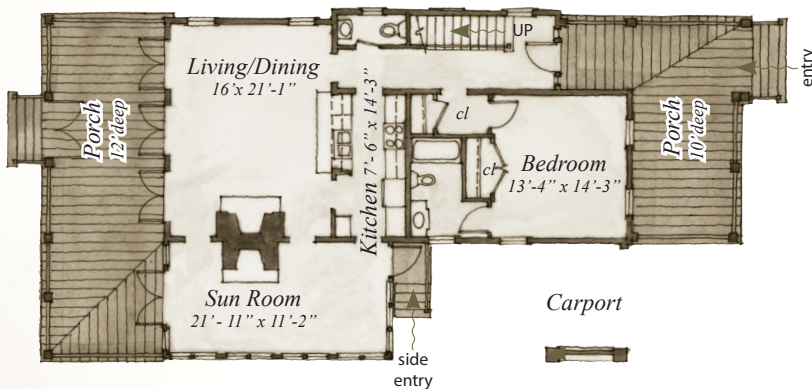


REAR ELEVATION

FLOORPLAN



UPPER FLOOR
1,055 S.F.



MAIN FLOOR
1,248 S.F.

Plans are available on a limited basis. All dimensions are approximate.

ARCHITECTURAL DETAILS

EXTERIOR:

- Three-bay house with brick foundation, turned baluster and lap siding
- Well-proportioned windows with operable shutters
- 5v metal roof in keeping with vernacular
- 10' deep covered front porch encourages neighborhood interaction
- Rear screened porch runs width of home and provides sheltered outdoor living area

INTERIOR:

- Well-proportioned trim details in keeping with architectural style
- Select rooms detailed with vertical buttboard paneling
- Extensive use of transoms over doors and cased openings for shared light
- Kitchen has suspended glass cabinets that provide unobstructed view to living/dining room
- Upper floor stairhall features a desk niche

77 ANNAPOLIS COURT

PLAN PRICING:
 SCHEDULE 'G' RE-USE FEE (INCLUDES 3 PLAN SETS)
 SCHEDULE '4' INTERIORS PACKAGE RE-USE FEE
 \$50 PER ADDITIONAL PLAN SET
 \$40 GROUND SHIPPING/HANDLING

OUR
TOWN
PLANS